

ULTIMATE 650 SQ FT HOME FORTRESS

● FOR ONLY \$6500 ●



Ultimate 650 sq ft Home Fortress

Copyright © 2020 by DIRECT RESPONSE SRL

All rights reserved. No part of this publication may be reproduced, distributed, or transmitted in any form or by any means, including photocopying, recording, or other electronic or mechanical methods, without the prior written permission of the publisher, except in the case of brief quotations embodied in critical reviews and certain other non-commercial uses permitted by copyright law. For permission requests, write to the publisher, addressed "Attention: Permissions Coordinator," at the address below.

Direct Response SRL

support@diysanctuary.net

Ordering Information:

Please visit <https://www.diysanctuary.net/>

Disclaimer: The content of this book is for informational purposes only. Although the author and publisher have made every effort to ensure that the information in this book is correct, the author and publisher do not assume and hereby disclaim any liability to any party for any loss, damage, or disruption caused by errors or omissions, whether such errors or omissions result from negligence, accident, or any other cause. The publisher and the author make no guarantees concerning the level of success you may experience by following the advice contained in this book.

Table of Contents

Building Supplies List	7
Required Building Materials	7
Required Tools	8
 ANNEX	 9

Building Supplies List

As designed, this fortress is 658 square feet, divided in different areas: living area – 250 sq. ft., dining + kitchen area – 130 sq. ft., bedroom – 205 sq. ft., and bathroom – 73 sq. ft.

The fortress will include four connected domes as follows:

- The main dome (living area) will be 19' 32" tall.
- The second dome (bedroom) will be 17' 88" tall, and will be connected to the main dome through a hallway 9' 20" tall.
- The third dome (dining and kitchen area) will be 15' 10" tall, and will be connected to the main dome through a hallway 9' 20" tall.
- The third dome (bathroom) will be 12' 20" tall, and will be connected to the main dome through a hallway 9' 20" tall.

You'll find below a supply list along with some links and current prices so that you can get what you need.

Adapt this list according to any modifications in size or amenities that you make.

REQUIRED BUILDING MATERIALS

- 1800 standard polypropylene bags (15" x 27") - price: \$0.30 per empty bag (\$300 for 1000 pieces), or \$3.50 per piece for filled bags (www.nmdirtbags.com)
- Material for filling the bags if you buy them empty (each bag could be filled with 50 kg of composite - earth, sand or gravel (www.nmdirtbags.com))
- Plastering for covering 3900 sq. ft of walls
- Pressure-treated lumber (2x4) - pieces of 2" x 4" x 16' – current price per piece: \$7.5-\$8 (www.lowes.com)
- Pressure-treated lumber (2x6) - 2-3 pieces of 2" x 6" x 8' boards for the door frame - current price per piece: \$12 (www.lowes.com)

- Barbed wire - approximately 5000 ft (4 packs of 1320 ft) – current overall price: \$260 (www.homedepot.com)
- Round skylight windows of 12.5 inch diameter – current price: \$22 each (www.homedepot.com)
- One wooden door – 102.5 inch height – current price: starting from \$100
- Door frame anchors – current price: \$0.04 – \$0.08 each (www.alibaba.com) Or you may use pieces of wood with threaded rod screwed into them)
- Stainless steel insulated stove pipe (to use as vent) – price: \$35 (www.longbottomandhardsaw.com)
- Silicone sealant – price: \$4 (www.homedepot.com)
- Ball of string – 190' length roll – current price: \$5 (www.amazon.com)

Most of these materials, with the exception of the bags, are fairly easy to find used (check sites such as freecycle.com and craigslist.org) so you could significantly reduce your cost to build your fortress if you go that route.

In theory, if you find and repurpose the building materials for free and dig your own composite material to fill the bags, you could build this fortress, exactly as designed, for about \$550. The cost will raise up to \$6500 if you'll buy all building materials that you need.

REQUIRED TOOLS

- Tape line
- Water Level
- Tamper
- Metal plate
- Plastering tools

ANNEX

Print and use the following plans and figures in order to build your earth bag house. The following plans relate to:

Plan 1 – Front view

Plan 2 – Front view plan

Plan 3 – Back view plan

Plan 4 – View from above

Plan 5 – Ground floor plan

Plan 6 – Side view 1

Plan 7 – Side view plan 1

Plan 8 – Side view 2

Plan 9 - Side view plan 2

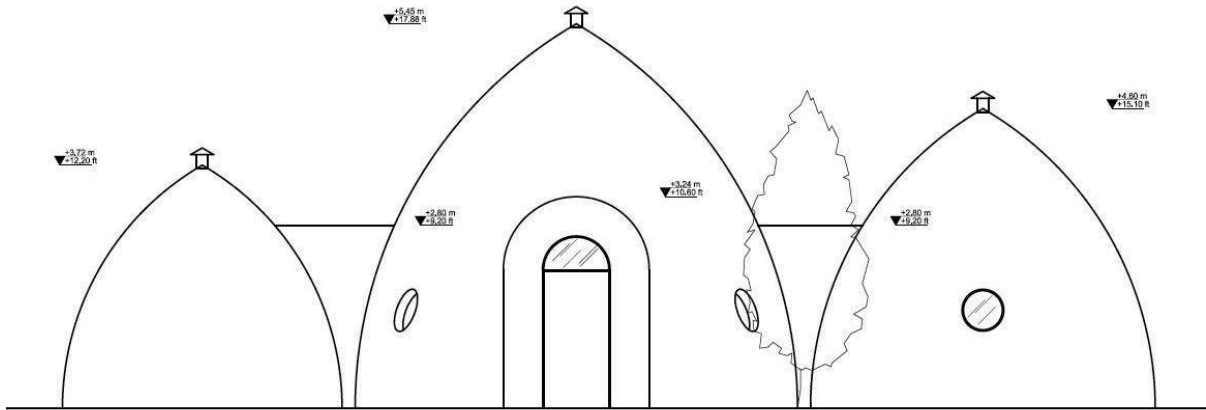
Also, print and use the pictures with brief Step-by-step instructions in order to see the basic techniques that you need to follow when building your house.

Keep in mind to apply these techniques depicted in Step-by-step instructions to the exact measures of the dome that you are actually building.

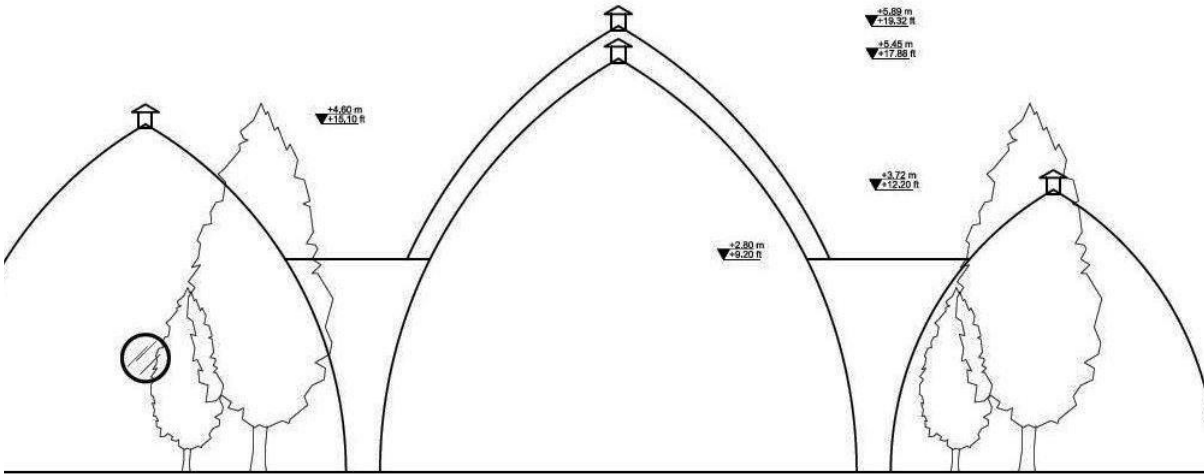
Plan 1 - FRONT VIEW



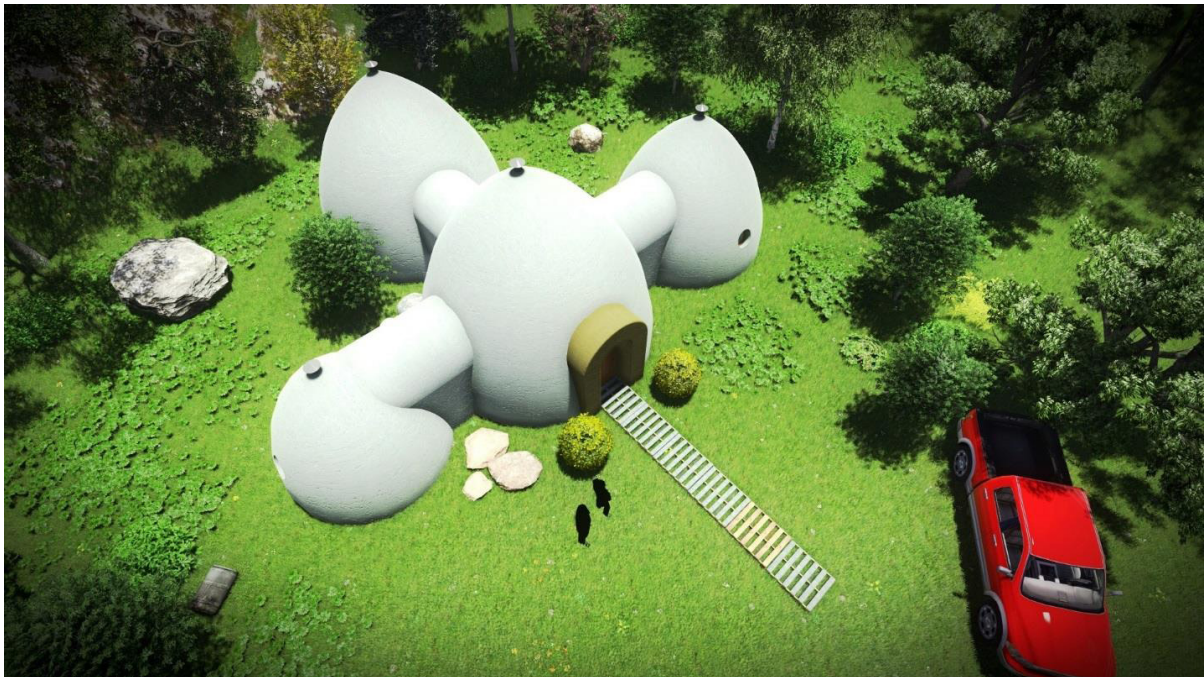
Plan 2 - FRONT VIEW PLAN



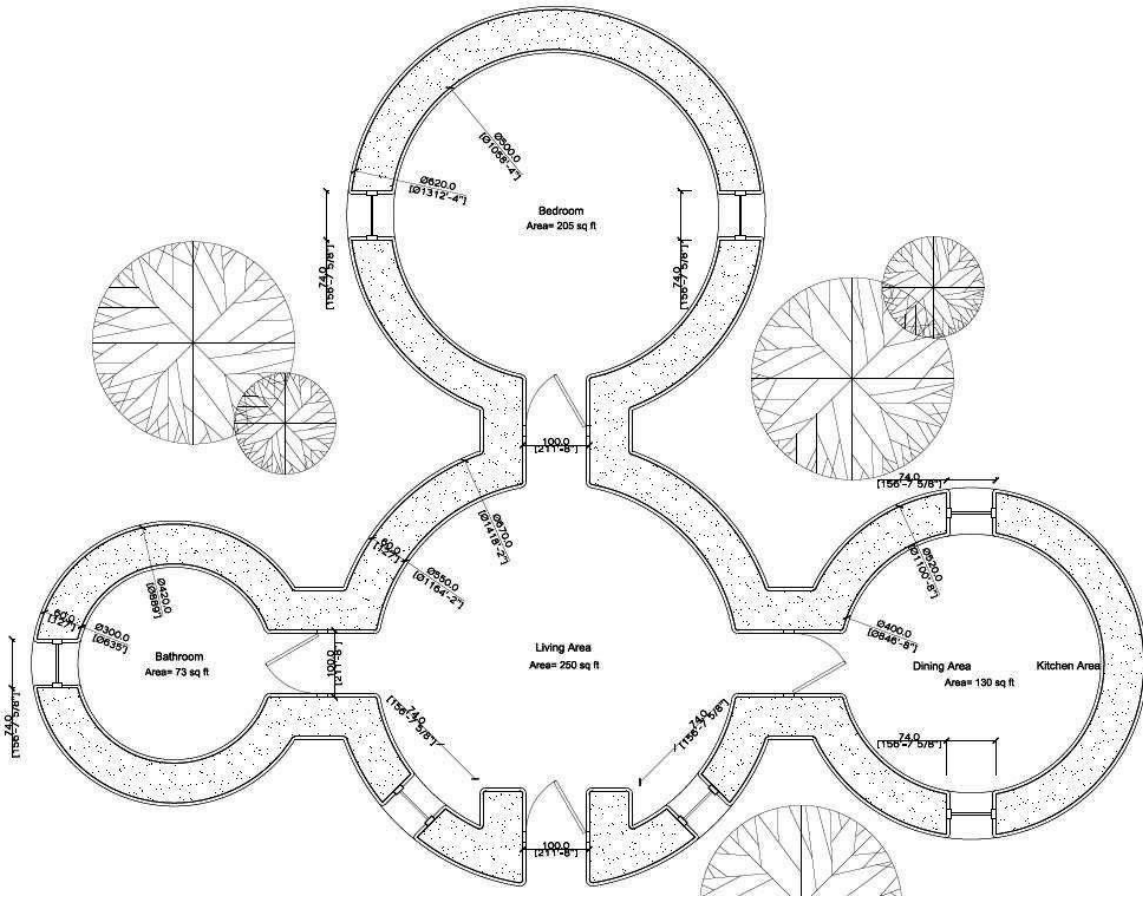
Plan 3 - BACK VIEW PLAN



Plan 4 – VIEW FROM ABOVE



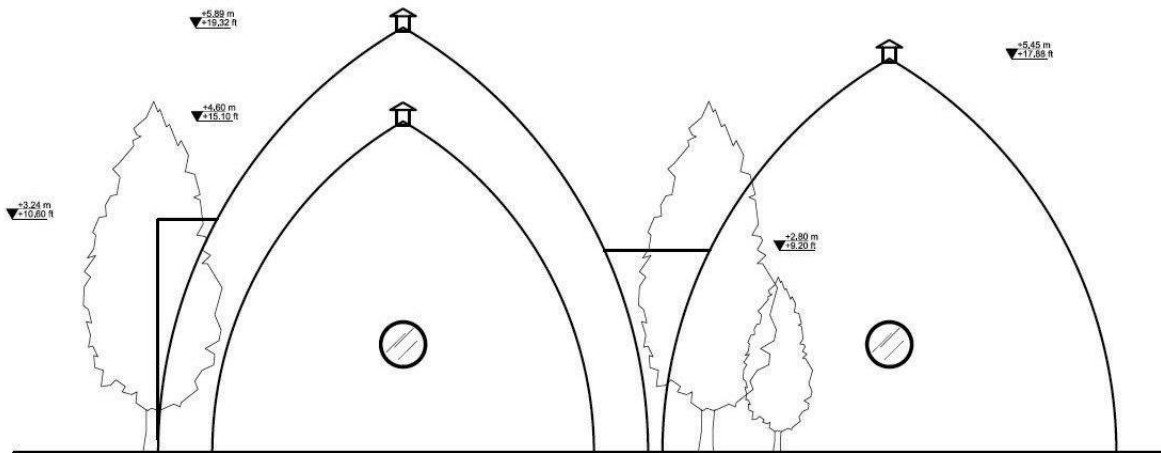
Plan 5 – GROUND FLOOR PLAN



Plan 6 – SIDE VIEW 1



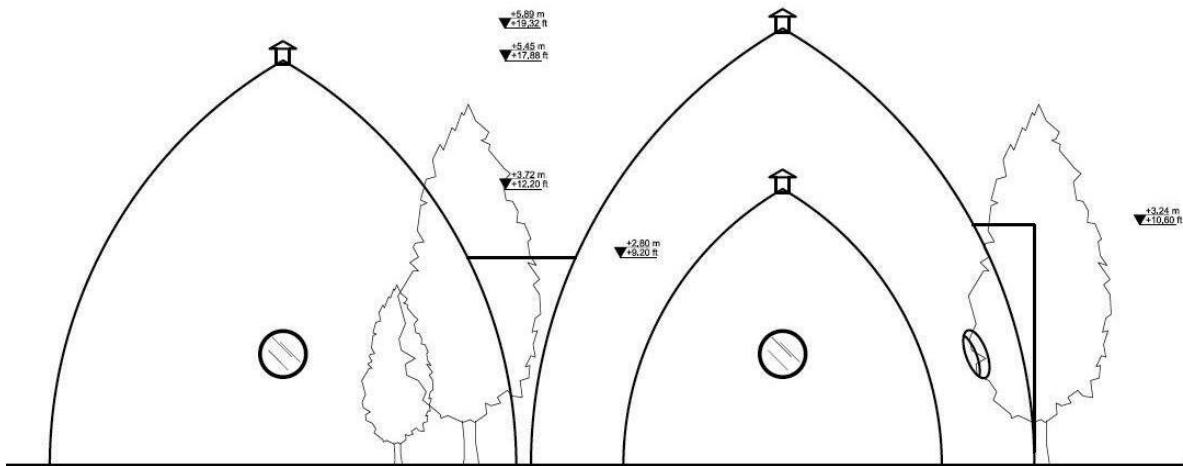
Plan 7 – SIDE VIEW PLAN 1



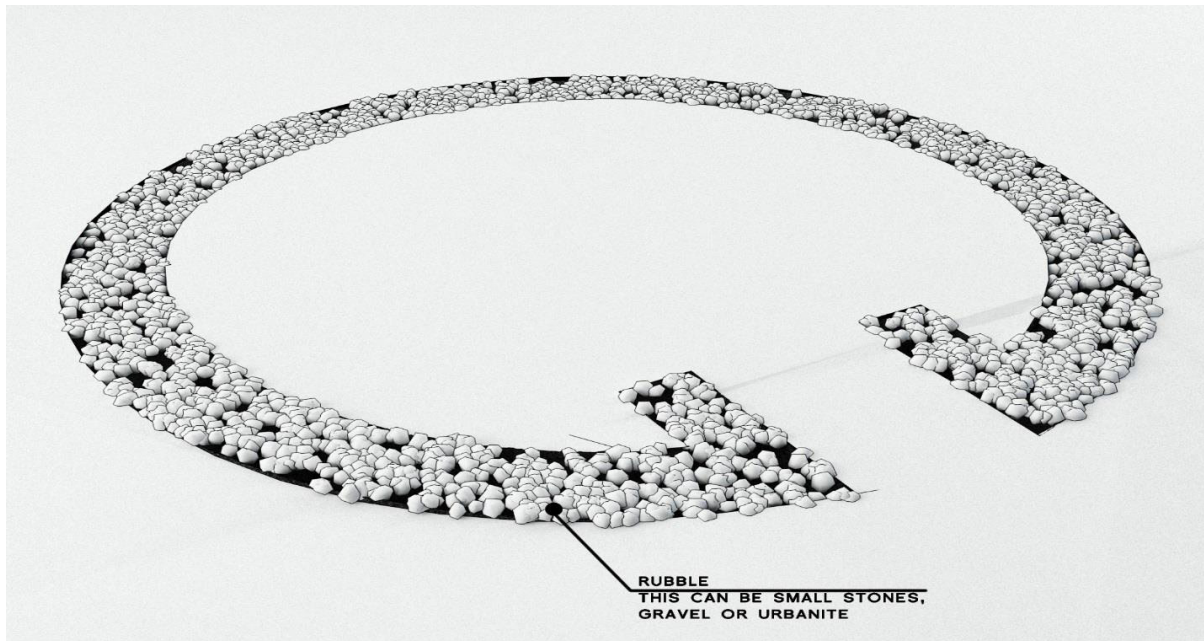
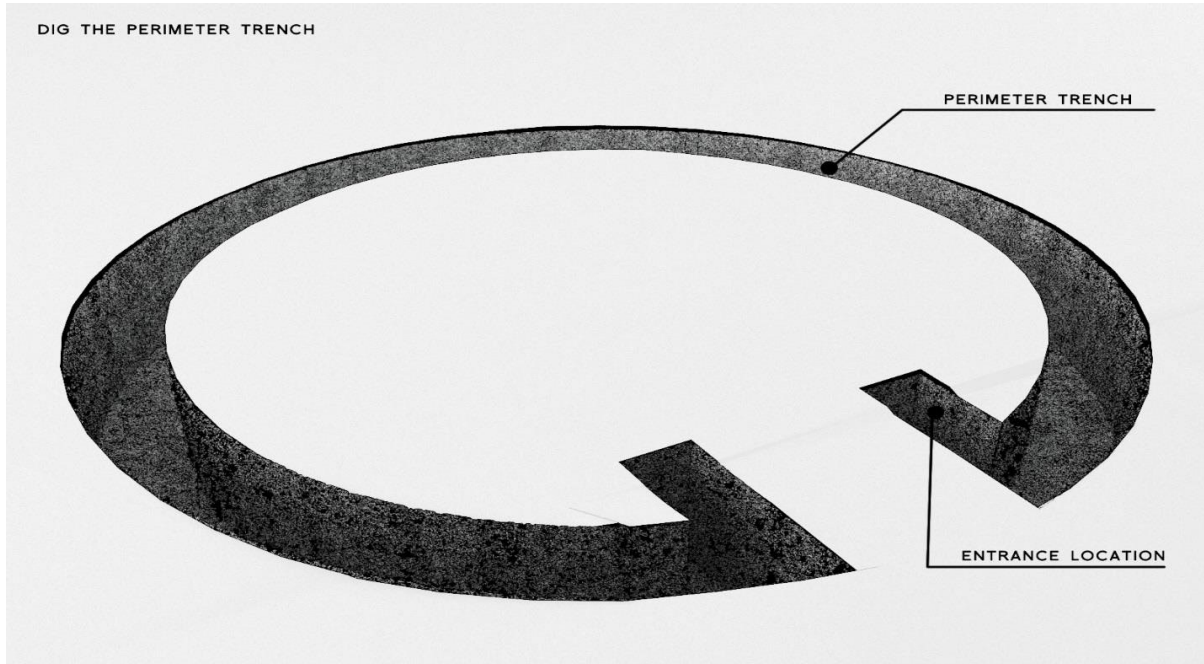
Plan 8 - SIDE VIEW 2



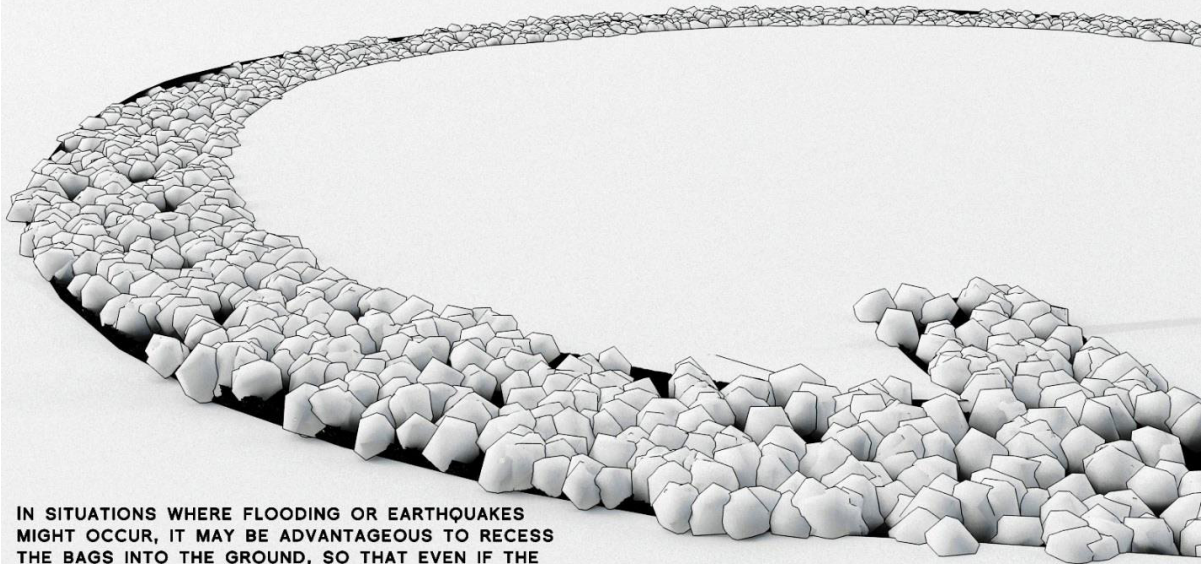
Plan 9 - SIDE VIEW 2 PLAN



STEP BY STEP INSTRUCTIONS

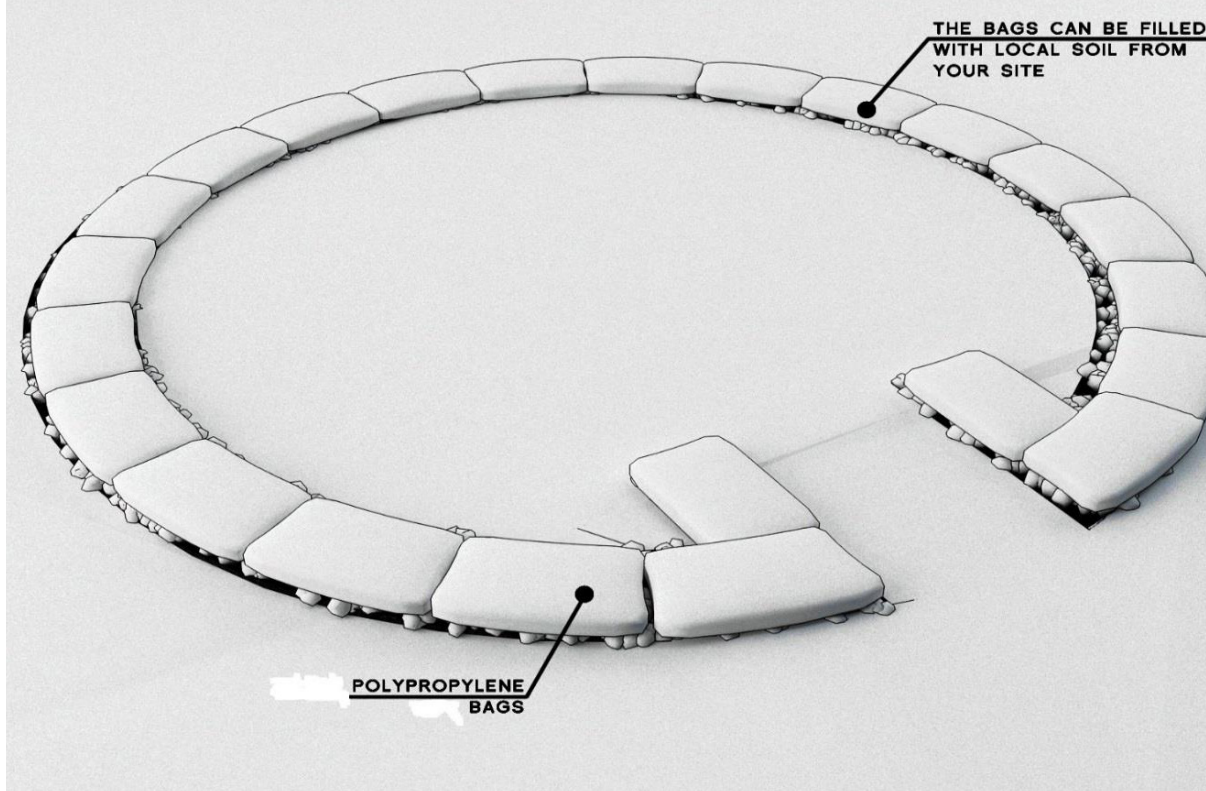


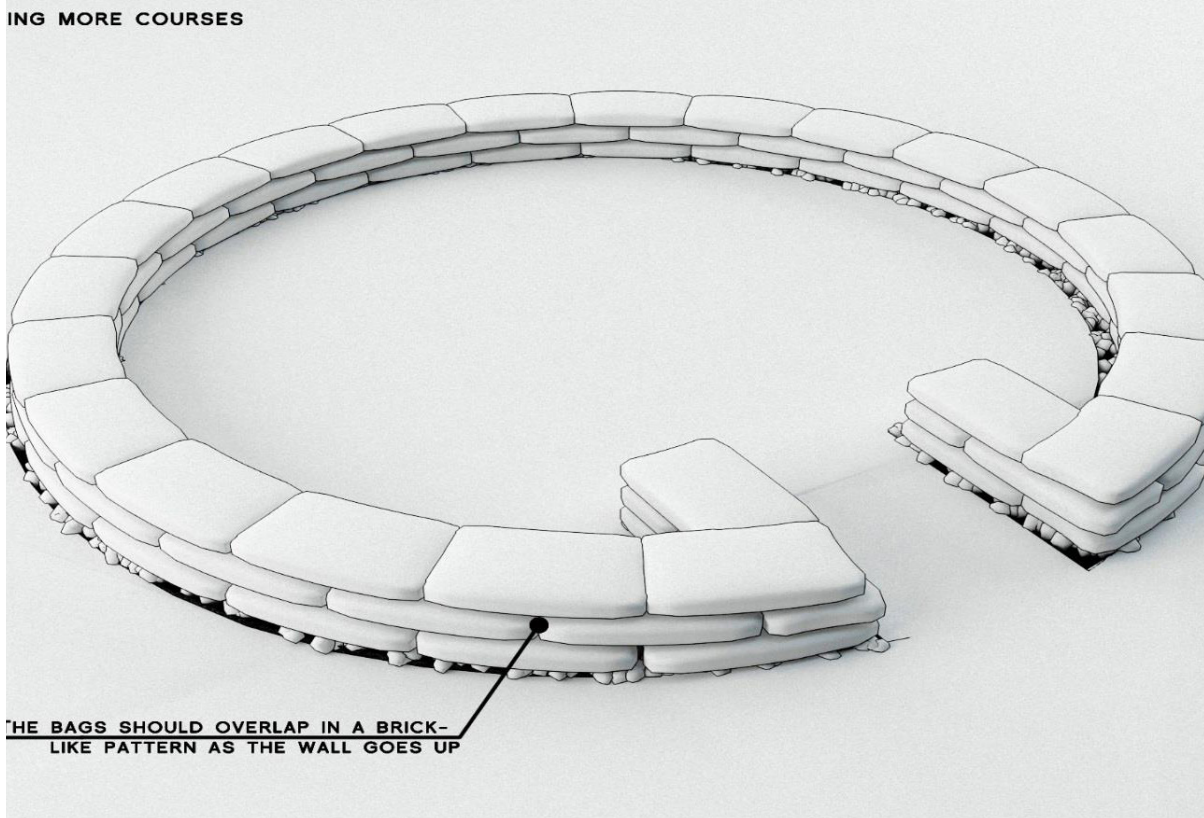
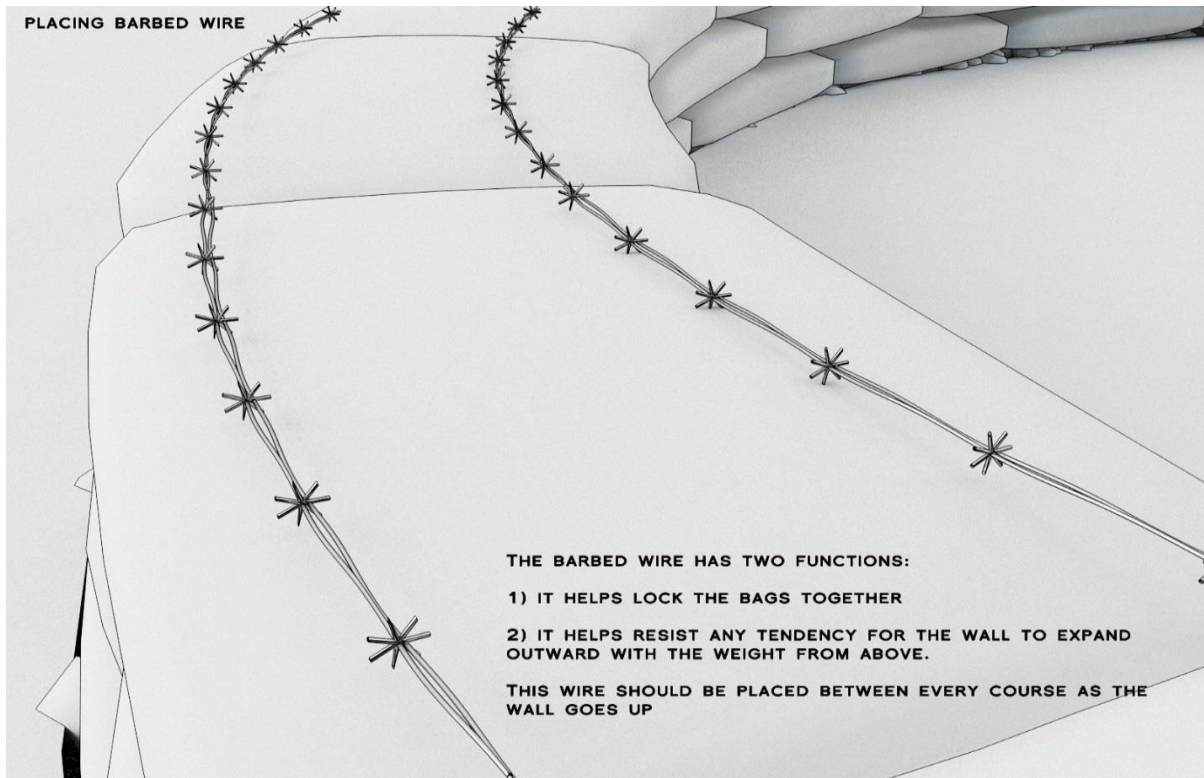
FILL THE TRENCH WITH COBBLES



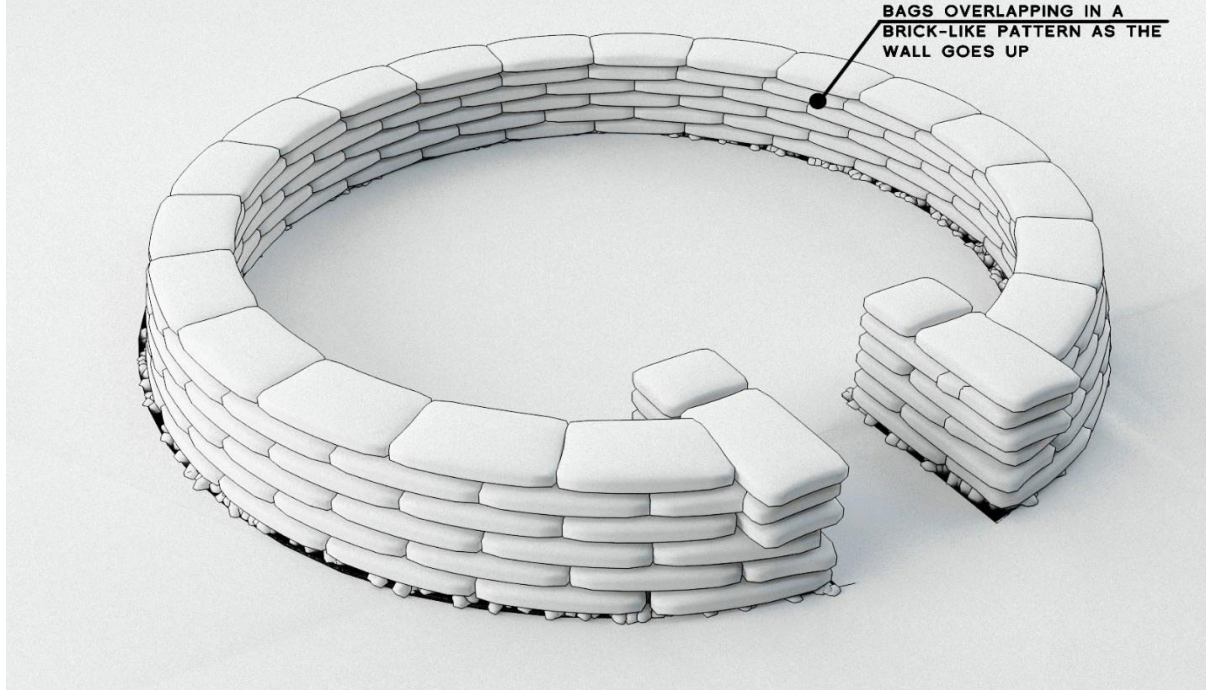
IN SITUATIONS WHERE FLOODING OR EARTHQUAKES MIGHT OCCUR, IT MAY BE ADVANTAGEOUS TO RECESS THE BAGS INTO THE GROUND, SO THAT EVEN IF THE SOIL SURROUNDING THE DOME IS UNDERMINED, THE DOME ITSELF WOULD LIKELY NOT BE AFFECTED.

LAYING THE BAGS

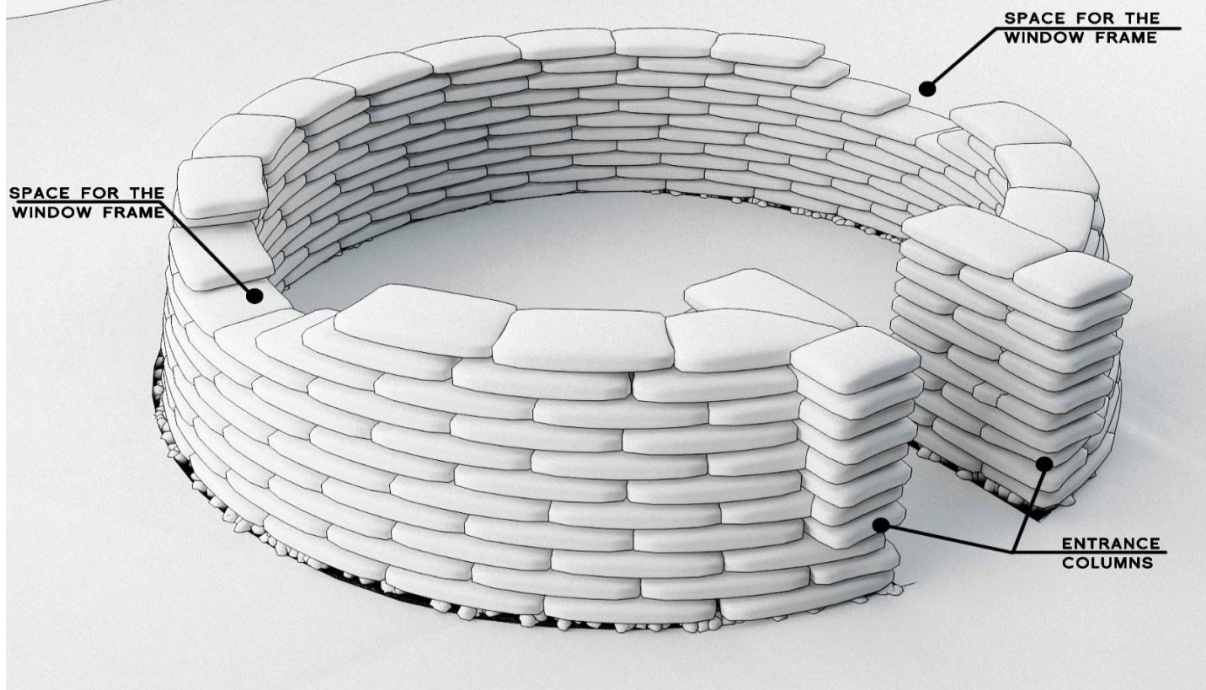


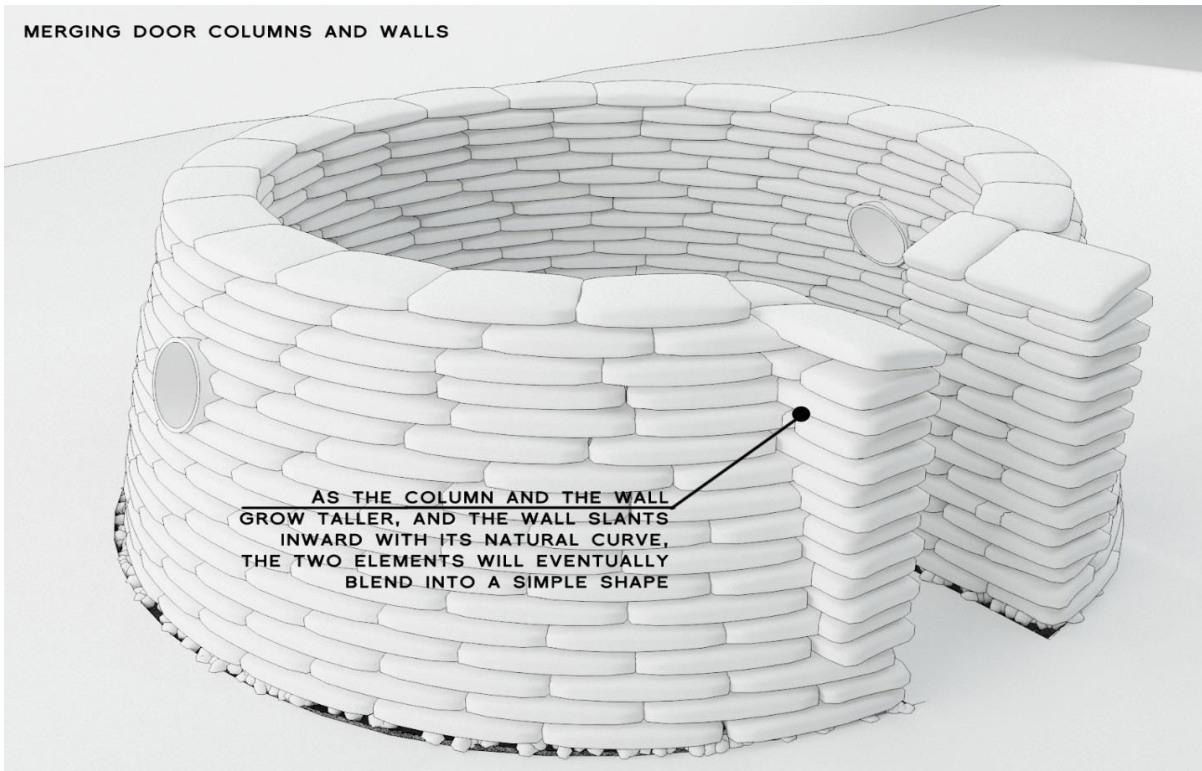
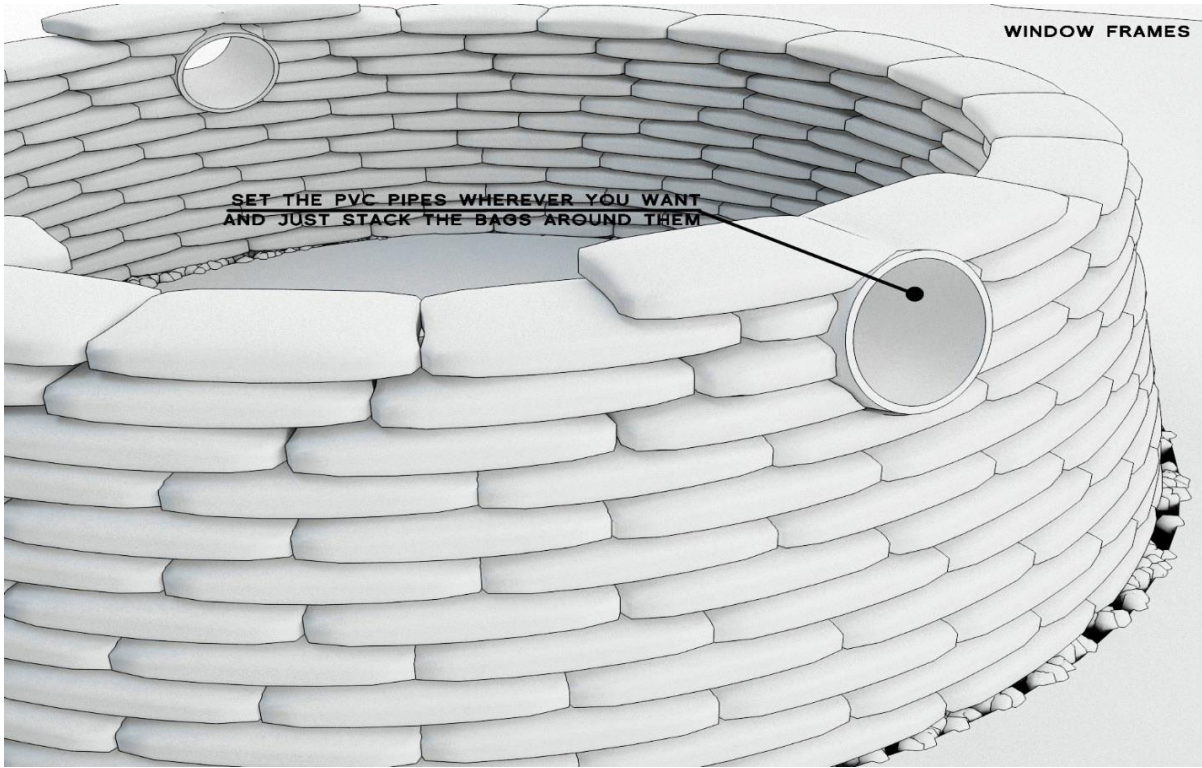


ADDING MORE COURSES



DOOR AND WINDOWS POSITIONS





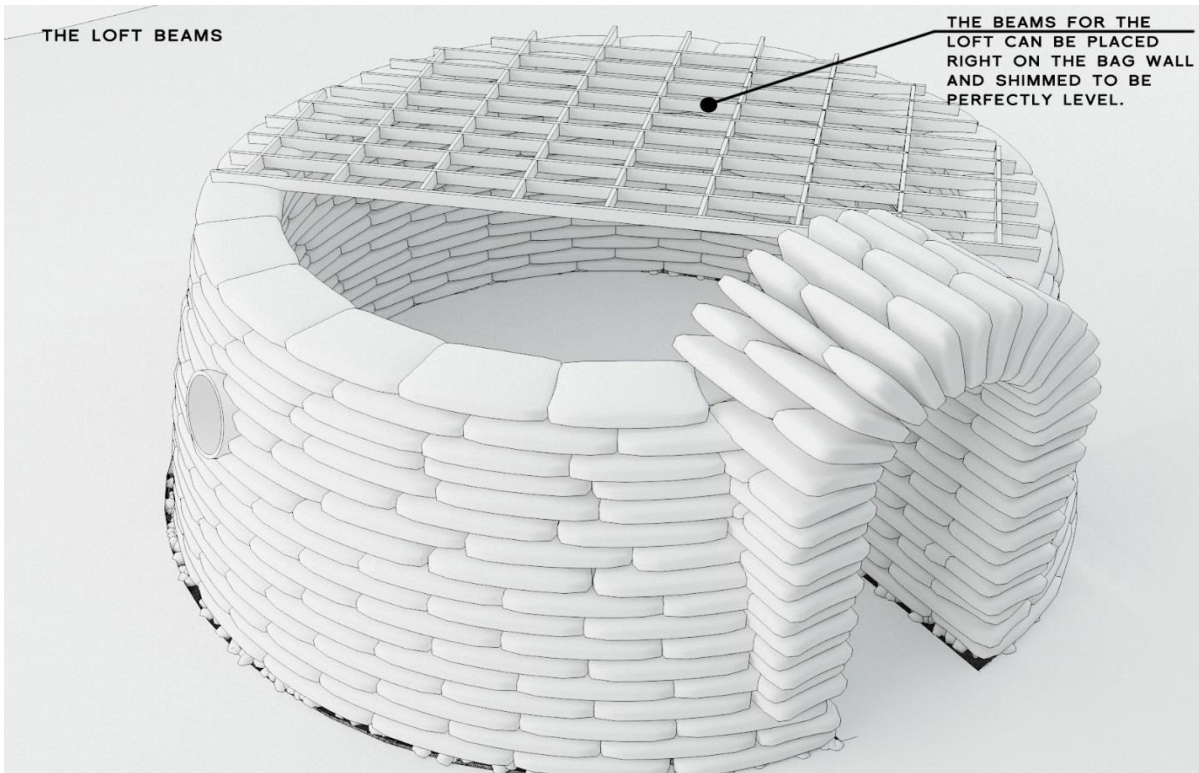
THE ARCH FORM

THE FORM FOR THE ARCH WAS MADE WITH TWO PIECES OF PLYWOOD CUT TO THE RIGHT SHAPE. THE FORM CAN BE USED OVER AND OVER FOR ANY ARCH OF THIS SIZE. THE BAGS ARE PLACED IN SUCH A WAY THAT THEY RADIATE OUTWARD, AND SHOULD BE TAMPED INTO PLACE.



THE LOFT BEAMS

THE BEAMS FOR THE LOFT CAN BE PLACED RIGHT ON THE BAG WALL AND SHIMMED TO BE PERFECTLY LEVEL.

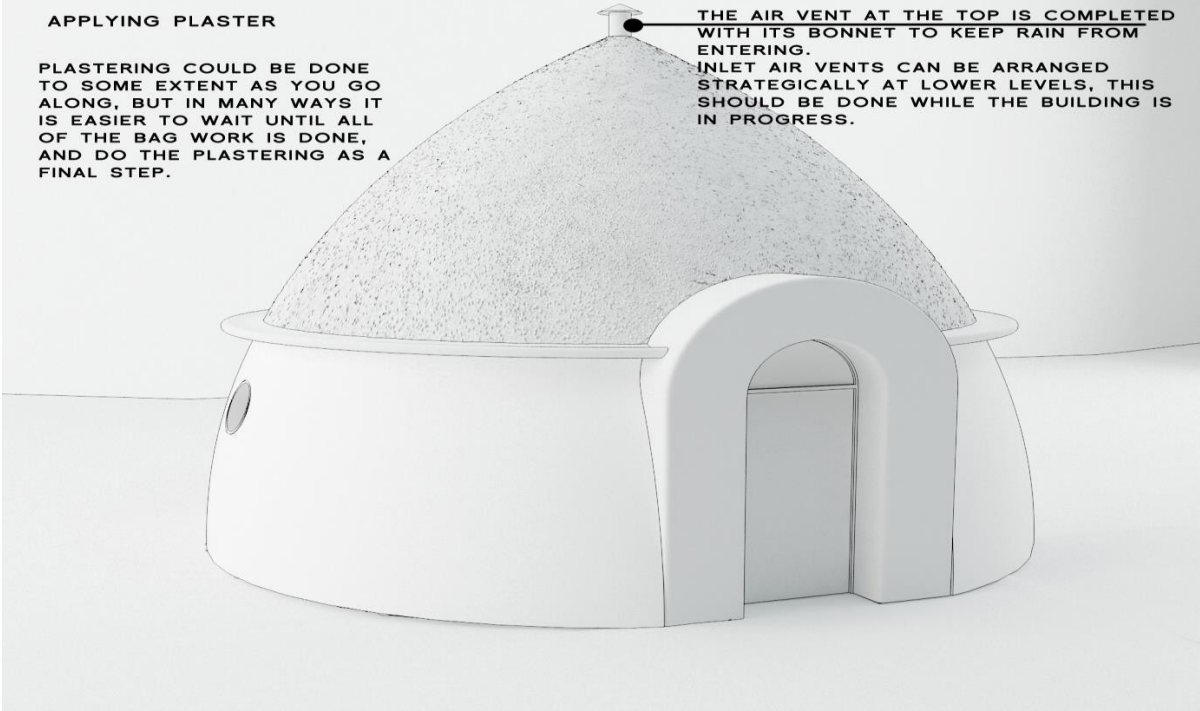


APPLYING PLASTER

PLASTERING COULD BE DONE TO SOME EXTENT AS YOU GO ALONG, BUT IN MANY WAYS IT IS EASIER TO WAIT UNTIL ALL OF THE BAG WORK IS DONE, AND DO THE PLASTERING AS A FINAL STEP.

THE AIR VENT AT THE TOP IS COMPLETED WITH ITS BONNET TO KEEP RAIN FROM ENTERING.

INLET AIR VENTS CAN BE ARRANGED STRATEGICALLY AT LOWER LEVELS, THIS SHOULD BE DONE WHILE THE BUILDING IS IN PROGRESS.



FINISHING THE FIRST PLASTER COAT

PLASTERING IS AN ACTIVITY WHERE HELP IS ALWAYS WELCOME. IT DOESN'T TAKE MUCH EXPERIENCE TO BE ABLE TO DO IT.

